

The Preserve at Laguna Ridge  
**CASSANDRA**



**Elevation A**

**Available elevations:**



**Elevation A**



**Elevation B**



**Elevation D**

**Approx. square feet:** 2,500

**Stories:** 1

**Bedrooms:** 3 - 4

**Garage:** 2-car

**Plan Number:** N642

At the heart of the ranch-style Cassandra plan is the kitchen, equipped with yards of counter space, a long center island with a sink, and plenty of cabinet and walk-in pantry storage. It opens onto a nook on one side, to the spacious great room on another and to an elegant dining room with butler's pantry on the third side. Two bedrooms at the front of the home share a convenient Jack-and-Jill bath, while the master suite offers a big walk-in closet and a private master bath with double sinks and a separate tub and shower. Options include an additional bedroom, covered patio, multi-slide doors, deluxe master bath features and gourmet kitchen.

**COMMUNITY LOCATION**

9996 Avocado Way  
Elk Grove, CA 95758  
916-512-2004

**HOME GALLERY**

One Harbor Center Suite 150  
Suisun City, CA 94585  
707-416-2800



**COMMUNITY LOCATION**

9996 Avocado Way  
Elk Grove, CA 95758  
916-512-2004

**HOME GALLERY**

One Harbor Center Suite 150  
Suisun City, CA 94585  
707-416-2800

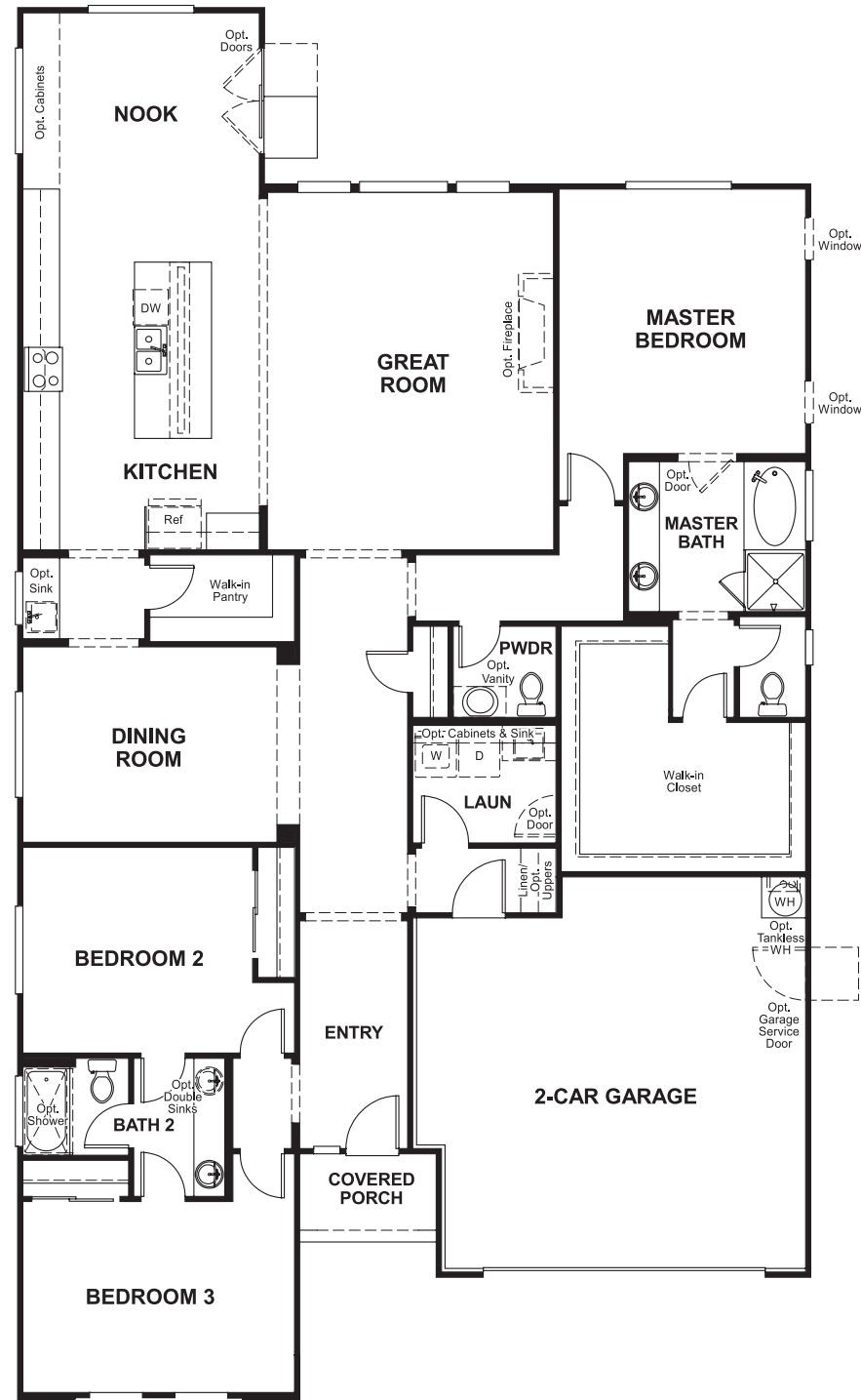


The Preserve at Laguna Ridge  
**CASSANDRA**

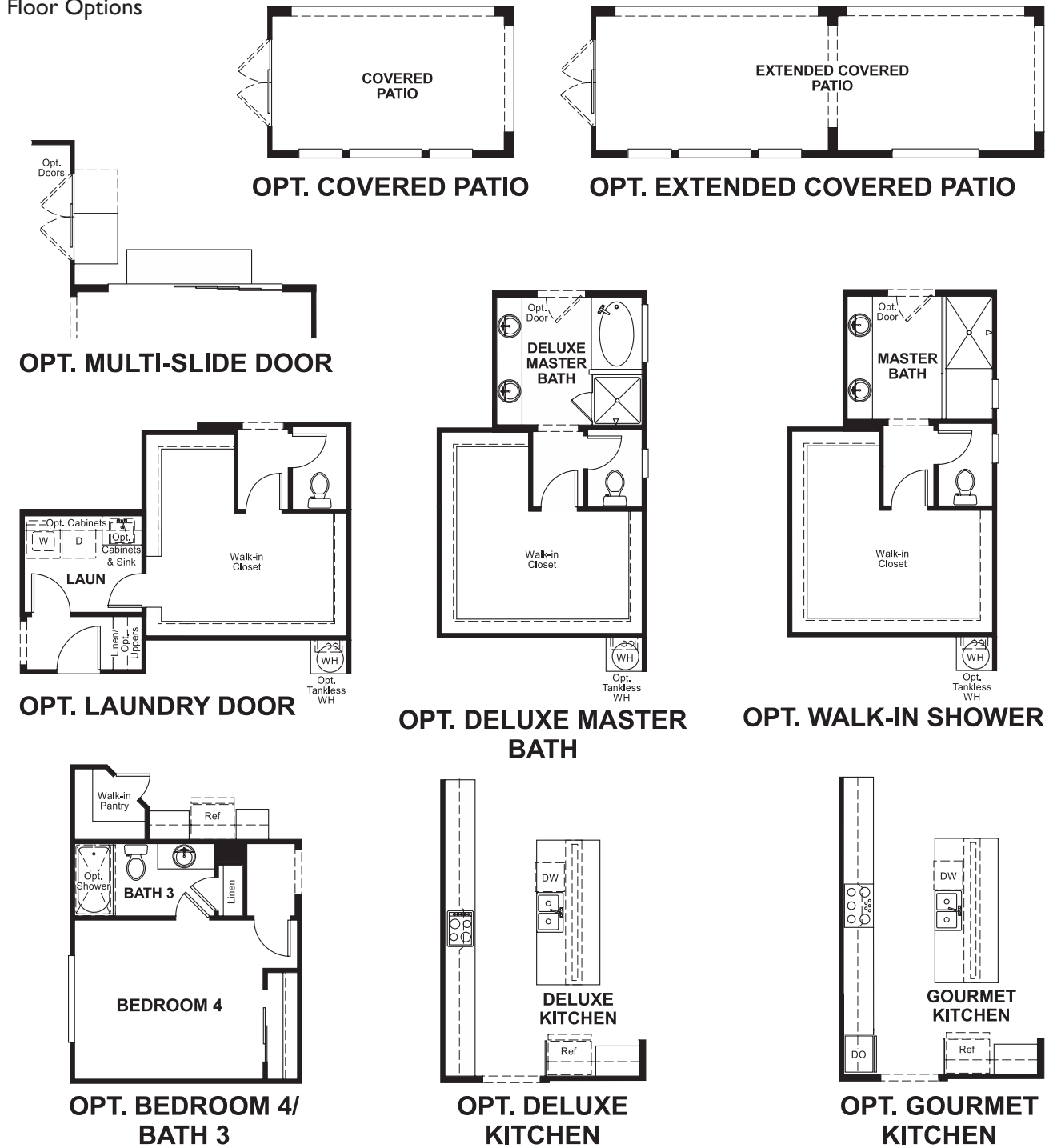
Approx. square feet: 2,500  
Stories: 1  
Bedrooms: 3 - 4

Garage: 2-car  
Plan Number: N642

**Floor Plan**  
Main Floor



**Floor Plan**  
Main Floor Options



**THIS PLAN'S PROJECTED  
HERS® INDEX = 66\***  
Projected Rating Based on Plans – Field Confirmation Required

**How does this floor plan rate?**  
Take a look: 100 = Standard new home\* 130 = Typical resale home\*\*  
The lower the number, the better! Refer to the RESNET® HERS index brochure or go to [www.RESNET.us](http://www.RESNET.us) for details.

**What's a HERS® Index?** HERS stands for Home Energy Rating System, a system created by RESNET® to measure home energy efficiency.<sup>^</sup>  
A Projected HERS index or rating is a computer simulation performed prior to construction by a third-party HERS rater using RESNET-accredited rating software, rated feature and specification data derived from home plans, features and specifications, and other data selected or assumed by the rater. The projected HERS index is approximate and is subject to change without notice. Actual results will vary.

\*This information is presented for education purposes only. The HERS index for a confirmed rating will be determined by a third-party HERS rater based on data gathered from on-site observations and, if required, testing of rated features for a home as featured, optioned, located, oriented and/or built.  
+Standard new home is based on the RESNET® Reference Home definition with a HERS® index of 100 (based on the 2006 International Energy Conservation Code).  
\*\*Typical resale home is based on the U.S. Department of Energy definition with a HERS® index of 130.

<sup>^</sup>RESNET® has developed the HERS® index to indicate the comparative efficiencies of homes. It is no guarantee that energy efficiencies will be achieved.